

KASPER ENGINEERING PVT. LTD.

Lighting The World

Kasper Engineering is the leading manufacturer and supplier of High-Quality Electrical and Lighting Poles. Our journey initiated from 2013 and today we have achieved remarkable expertise in our product ranges. Starting from Octagonal Poles, High Mast Poles and Flag Mast Poles, we offer a variety of products. Our strength lies in the spellbound quality of our products that we deliver at reasonable and affordable rates. We are ISO 9001:2015 certified firm and our team consists of proficient experts and adept employees who possess the capability to design and engineer the poles as per client's specific requirements.

VISION

To keep evolving the manufacturing process and work collectively to deliver breakthrough value to our customers.

To carry out performance improvements aiming to achieve customer delight.



HIGH MAST | FLAG MAST | OCTAGONAL POLE | TUBULAR POLE |
STREET LIGHT POLE | STADIUM MAST | DECORATIVE POLE

Lighting Poles Manufacturer



OCTAGONAL POLE

3 Metre - 13 Metre

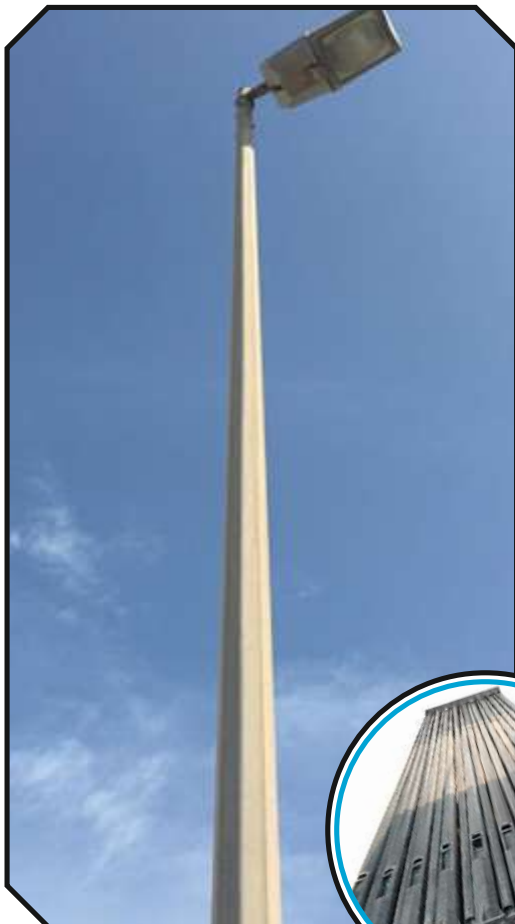
Our specifically engineered Galvanized **Octagonal Poles** are manufactured with duly segregated and procured top class HR Sheet. We rather manufacture this product owing to deliver prolonged durability.

It's a completely corrosion-resistant product. Its primary utilization is for street lighting purposes and for installation of wires.

Our Galvanized Octagonal Poles are known for their trendy outlook and easy installation. Iron and steel constitutes the strong structure of these poles and increases their reliability at the same time. The poles assure safety and visibility all throughout and can be designed as per specific requirements laid down by the client.

Technical Specification

POLE TYPE	HEIGHT (Mtr)	Top Dia (mm)	Bottom Dia (mm)	Sheet Thickness	Base Plate LxWXT	Foundation Bolt (No.xDiaxmm)
KOP03	3	70	130	3	200x200x12	4x16x450
KOP04	4	70	130	3	200x200x12	4x16x450
KOP05	5	70	130	3	200x200x12	4x16x450
KOP06	6	70	130	3	200x200x12	4x16x600
KOP07	7	70	130	3	220x220x12	4x20x600
KOP08	8	70	135	3	225x225x12	4x20x750
KOP09	9	70	155	3	260x260x16	4x24x750
KOP10	10	70	155	3	260x260x16	4x24x750
KOP11	11	70	175	3	275x275x16	4x24x750
KOP12	12	70	175	3	275x275x16	4x24x750
KOP13	13	125	270	3	340x340x20	4x24x900



HIGH MAST

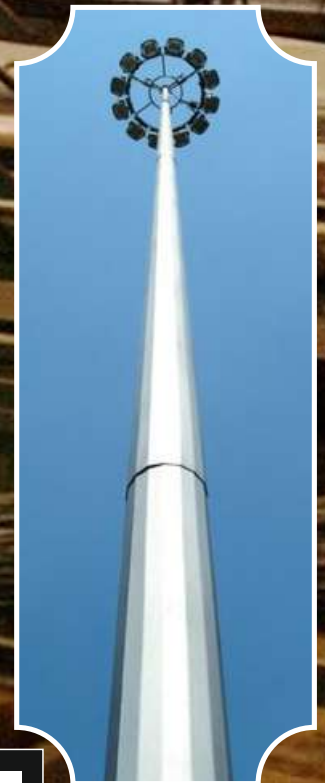
High Mast Poles are primarily used where a large lighting area is required. Its height is more than the height of conventional lighting poles. The most striking advantage of a high mast pole is that it can illuminate large areas with limited installation.

Our team of experts have engineered a variety of High Mast Light Poles for you to choose from.

Fabricated from stainless steel and with best in class technology, Kasper's High Mast poles promise to provide quality with zero defect generation assurance. In addition to the same, the material of poles is corrosion-resistant and sturdy in structure which ensures durability.

High Mast Poles are installed in numerous areas. Particularly multi-level road systems. Industrial or commercial areas, docks, airports, stations, car parks and even some hazardous areas.

We, Kasper Engineering provide you the best High Mast Poles with all related accessories with different heights that range from **12 meters to 40 meters**.



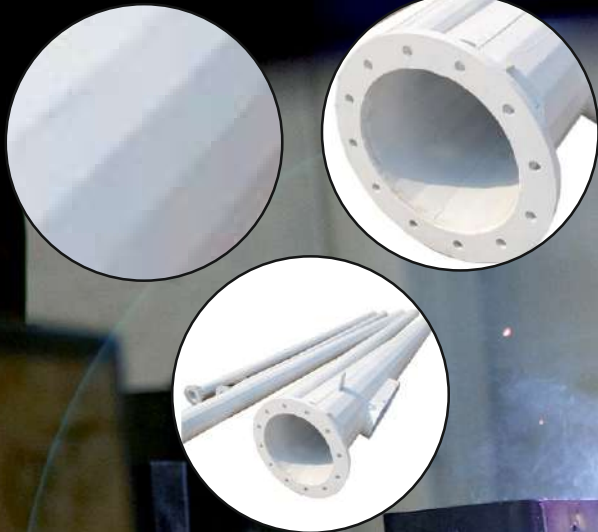
Technical Data

Tech Detail	12.5 Mtr	16 Mtr	20 Mtr	25 Mtr	30 Mtr
Material Construction	BSEN10025 S355				
Thickness	3, 3 mm	3, 4 mm	3, 4 mm	3, 4, 5 mm	3, 4, 5 mm
Top & Bottom Dia	150/360 mm	150/360 mm	150/410 mm	150/540 mm	150/540 mm
Size of base plate	540mm	540mm	610mm	740mm	740mm
Base plate thickness	20 mm	20 mm	25 mm	30 mm	30 mm
No. of foundation bolts	6 nos	8 nos	8 nos	12 nos	12 nos

FLAG MAST

A Flag signifies strength and respect and it captivates honour of one and all. We feel pride in manufacturing excellent quality flag poles that can bear the flag high at all costs and during any weather conditions. Our specifically designed flag poles have the solidity to withstand any natural disaster.

We offer customized flag poles to our clients along with accompanying accessories. The height of the flag pole is completely demand dependent. Our current manufacturing trend with respect to height ranges from **12 to 50 Metre**. Kasper Engineering have always been adaptable to the client's demands.



Technical Data

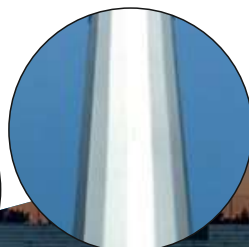
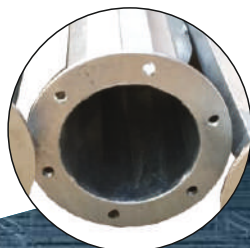
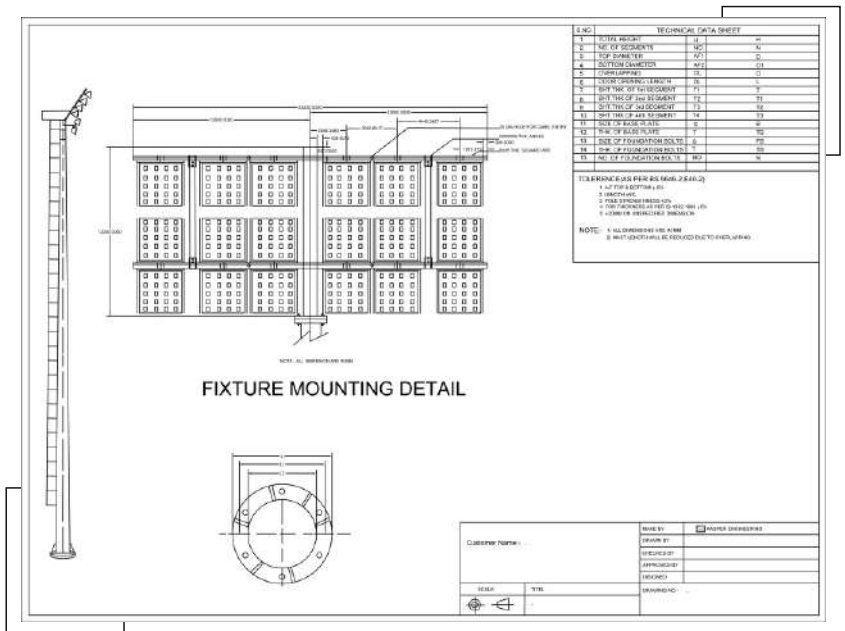
Tech Detail	16 Mtr	20 Mtr	25 Mtr	30 Mtr
Material Construction	BSEN10025 S355			
Thickness	3, 4 mm	3, 4 mm	3, 4, 5 mm	3, 4, 5 mm
Top & Bottom Dia	150/360 mm	150/410 mm	150/540 mm	150/540 mm
Size of base plate	540 mm	610 mm	740mm	740mm
Base plate thickness	20 mm	25 mm	30 mm	30 mm
No. of foundation bolts	8 nos	8 nos	12 nos	12 nos

STADIUM MAST

The **Stadium Mast Poles** are usually used at locations where high concentration of luminescence is required. Of course, sports arenas and stadiums are naturally the most important and 'go to' destination of these lights. Kasper's stadium mast lighting, without any doubt, instills the essence of enthusiasm and team spirit in both, the spectators and the sportsmen equally.

Height ranging from 30m to 50m , the poles possess customized headframe design to suit the specifications of the client.

Technical Data

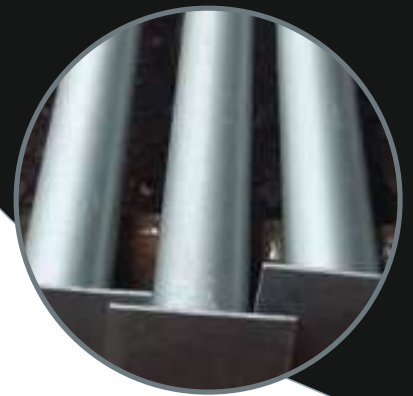
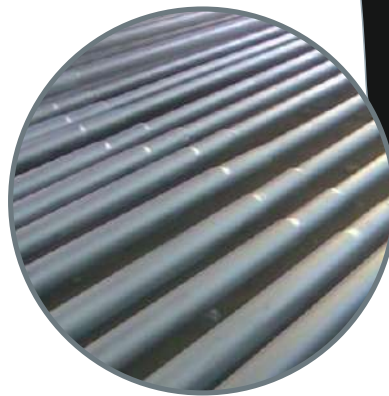


Kasper Engineering is on the way to revolutionize the technology invested in MS Tubular Poles. We design the poles aiming to offer assured comfort at the user's end. Manufactured by Mild Steel, the fabrication of poles is also dependent on the customer's requirements.

Red oxide, Silver Paint and Hot Dip Galvanized are few of the many features our poles exhibit. The poles are manufactured to be corrosion-free and adaptable to the pre-requisites of the end user.

◦ TUBULAR POLE ◦

(3 Metre - 16 Metre)



Technical Data

TECHNICAL DATA SHEET			
1	TOTAL HEIGHT	H	9MTR
2	NO. OF SEGMENT	N	3
3	SEGMENT LENGTH	H1, H2, H3	2.25MTR
4	TOP DIAMETER	OD1	76.1MM
5	MIDDLE DIAMETER	OD2	88.5MM
6	BOTTOM DIAMETER	OD3	114.3MM
7	SWAGING	S	-
8	TUBE THK. OF 1st SEGMENT	T1	3.25MM
9	TUBE THK. OF 2nd SEGMENT	T2	4.5MM
10	TUBE THK. OF 3rd SEGMENT	T3	4.5MM
BASE PLATE			
11	SIZE OF BASE PLATE	O	300X300MM
12	THK. OF BASE PLATE	T	6MM
BRACKET			
13	TYPE OF BRACKET	SINGLE ARM	1 MTR
14	TILT ANGLE	-	-
15	FOUNDATION BOLT	-	-

NOTE: - 1. SECTION IS TUBULAR
 2. MATERIAL CONSTRUCTION AS PER STANDARD
 3. MATERIAL
 a) WELDING - BS-5135 OR EQUIVALENT
 b) SWAGED POLE DONE BY MECHANICAL PROCESS

MANUFACTURER	KASPER ENGINEERING
DESCRIPTION	9MTR TUBULAR LIGHTING POLE
PROJECT	
CLIENT	
DRAWING NO.	KSPC-KE06-9 MTR-FF-STR

4. METAL PROTECTION
 a) RED OXIDE PAINT
 5. ALL DIMENSION ARE IN MM

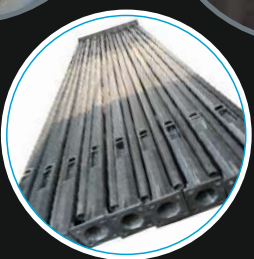
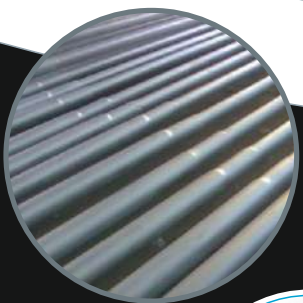
◦ STREET LIGHT POLE ◦

Street Light Tubular Poles we offer can be employed for highways street lights, factory yards, petrol pumps, over-bridge lights, garden flood lights, city beautification with poles and countless other applications. The vast size range of these Steel Tubular Poles is manufactured, designed and supplied for corrosion resistance, durability and visual appeal.

Applications

These Poles are used for Outside/Road Side Street Lighting System, In-house Lighting System (Campus, Malls, Societies, Factories, Go downs, Malls etc).

Our offered Street Light Tubular Poles are featured with pleasing design, robust construction, and high durability. These poles can be used for petrol pumps, small pathway, garden, street lights, factory yards, and myriad other applications. The provided poles are manufactured using top class iron and steel with the aid of advanced machines. Available in numerous colors, sizes, these Steel Tubular Poles can be purchased within minimum quantity order as per the requirement of our clients.



DESIGNER POLE

(3 Metre - 9 Metre)

Whenever one roams around in a street or neighborhood, a **Decorative Light Pole** surely elevates the overall ambiance of that area. Kasper Engineering provides attractive Outdoor Decorative Poles that are not only creative by design but also are manufactured from top grade iron and steel.

Be it street area illumination or bridges and toll roads lighting application, our decorative light poles shall add a hint of suave architectural taste along with strength and perfect durability. We aim at revolutionizing the urban and sub-urban landscape by developing an artistic appeal through our Outdoor Decorative Poles.

Features

- High Strength.
- Rust resistance.
- Innovative design.
- Weather resistance.



ELECTRICAL POLE



The significance of **Electrical Poles** in India is widespread and evolving. There are variety of electrical poles in which we hold profound expertse in MS Tubular Electrical Poles, The choice, of course, depends on importance of load, locationand usage. The most generic pre-requisite of electrical poles is to assist overhead power lines, as well as in different public utiliti such as cables, fiber opticables and a endant equipment such as street lights and transformers.

Kasper's manufactured poles are the key to any specificaatio relatati to electrical poles. We offer two ranges, MS Steel Tubular Poles and G.I Steel Tubular Poles. With the extravagant features of smooth surface finish, corrosion-resistance and robust consstructionthe electrical poles are cost-effeccve and supports easy installation.

SOLAR STREET LIGHT POLE

Solar Energy has come a long way in the past decade. In coming years, it is estimated that more than 115 Gigawatts (GW) of solar energy shall be consumed across the world, which is more than other generation technologies put together.

India, being a sub-tropical country, will enjoy the benefit of low cost solar energy generation for many years ahead.

Owing to the vast prospect of solar technology in India, Kasper Engineering brings to you Solar Octagonal Poles. The poles constitutes the complete structure such as LED arm pole, Battery Stand, Battery Box, Solar panel and base plate with or without Foundation Bolts.

With features like Rust and harsh climate resistance and sturdy construction, the poles can be installed for numerous lighting requirements at various commercial, residential and industrial locations. Solar Street Light Poles will undoubtedly inculcate an advanced and panoramic view of our future.



ARMS



Model Number - KSA01



Model Number - KSA02



Model Number - KSA03



Model Number - KSA09



Model Number - KSA04



Model Number - KSA06



RING



Model Number - KDA01



Model Number - KSA08



Model Number - KDA04



Model Number - KDA03



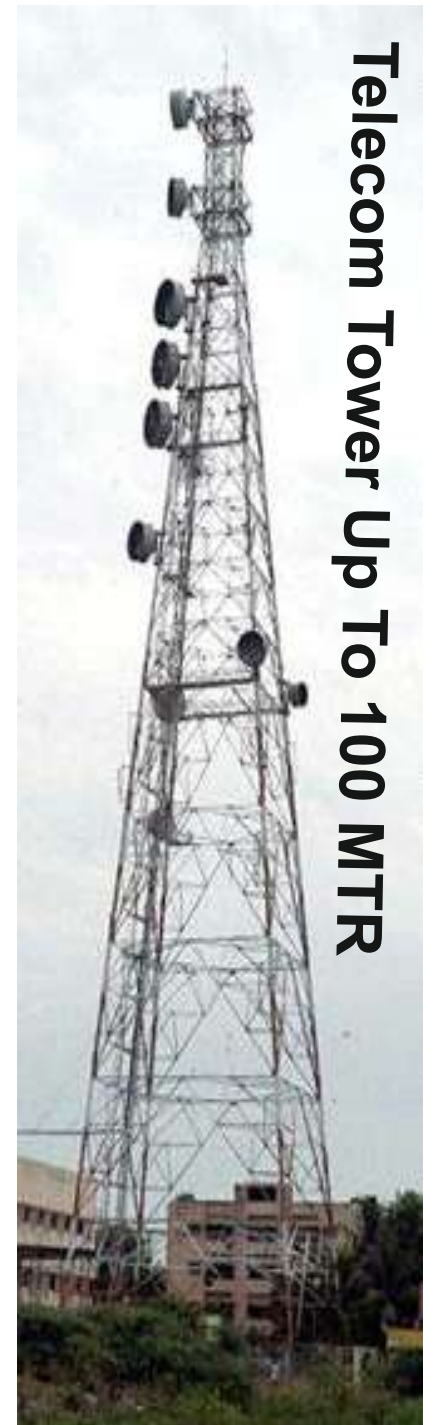
Model Number - KDA09



PEB Structure



Sub Station Structure



Telecom Tower Up To 100 MTR



Road Crash Barrier

PRESTIGIOUS CLIENTS



A Navratna CPSE



DMRC

Delhi Metro Rail Corporation



PWD



Scan with mobile

Contact Us

Head Office:- 500, P5 - Floor, Urbtech NPX, Sector 153, Noida-Greater Noida Expressway, Opp. Metro Station - Sector - 148 , Pin - 201310, Uttar Pradesh.

Works I :- I - 19, Site 5, Kasna Industrial Area, Greater Noida, Uttar Pradesh - 201310

Works II :- 90, Sapnawat Baroda Road, Panchsheel Nagar, Hapur, U.P.-245101

Ph.no. 0120-4174764, +91-9711629213, +91-9711629215

Website: www.kasperengineering.co.in, www.kasperengineering.com,

Email: admin@kasperengineering.com, sales@kasperengineering.com